



LUXURY NEW BUILD WITH VIEWS FOR SALE IN ANDORRA LA VELLA

Andorra la Vella / Andorra la Vella

Price from

€1,650,000

Surface

288 m² - 288 m²

Units

2

✓ Heating

✓ Parking

✓ Built in closets

✓ Views

✓ Terrace

✓ Outside



Andorra la Vella / Andorra la Vella

Discover these 2 charming semi-detached houses for sale, located in an exclusive residential area in Pal, close to the ski slopes and surrounded by a beautiful forest, facing east which ensures natural light during the mornings.

Layout:

Lower Floor: Independent entrance and space for three vehicles, offering comfort and functionality.

First Floor: Large terrace surrounding the chalet, ideal for enjoying the views. Bright living-dining room integrated with the kitchen, a bathroom and a bedroom of about 11m².

Second Floor: Three double bedrooms, one of them a suite with a private bathroom.

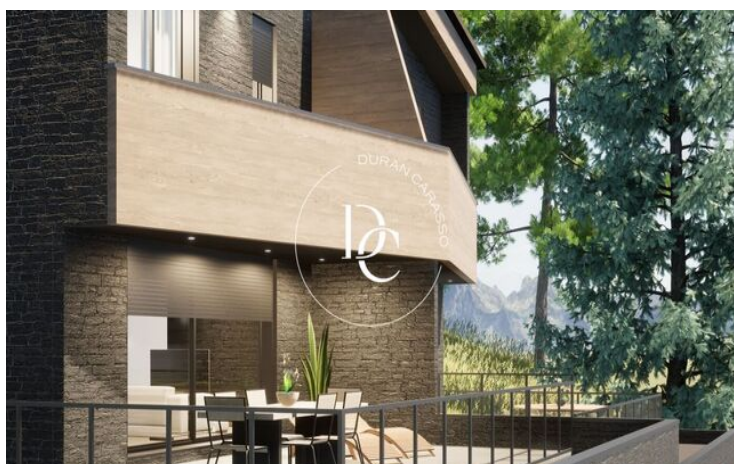
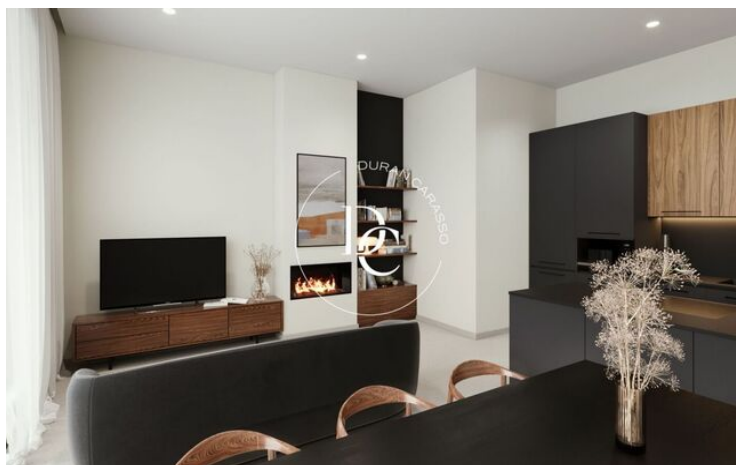
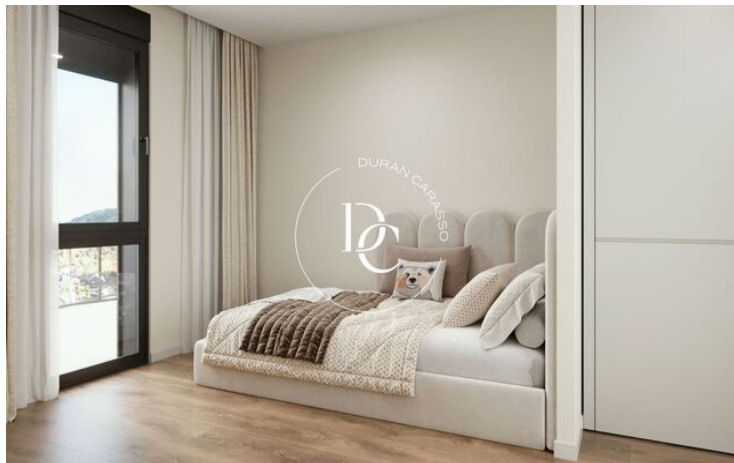
Quality of Materials: The homes stand out for their high construction quality, with geothermal energy and renewable energies for an efficient and sustainable home.

Personalization and Amenities: During the month of October, you will have the possibility of making personalized configurations in your chalet, adapting it to your needs and lifestyle. In addition, a pre-installation for an elevator and fireplace is offered, which adds an extra level of comfort and elegance.

This chalet is ideal for those looking for a mountain retreat with all modern comforts and an unrivaled natural setting. Don't miss the opportunity to create the home of your dreams in this paradise!

Units in this development

Type	Unit	Surface	Bedrooms	Bathrooms	Price	State
House	Casa A	m ² 289	4	3	€1,650,000	available
House	Casa B	m ² 289	4	3	€1,750,000	available





The data of each property is not part of an offer or a contract. Statements made by Durán Carasso Grupo Inmobiliario, verbally or in writing, regarding the property, its condition, or its value, should not be considered accurate or factual. The photographs only show specific parts of the property as they were at the time they were taken. The dimensions, areas, and distances provided are approximate and should be verified by the client. Computer-generated images are only an indication of the possible appearance of the property and may change at any time. Information regarding a property is subject to change at any time.

Contact us if you want more information or to arrange a viewing.