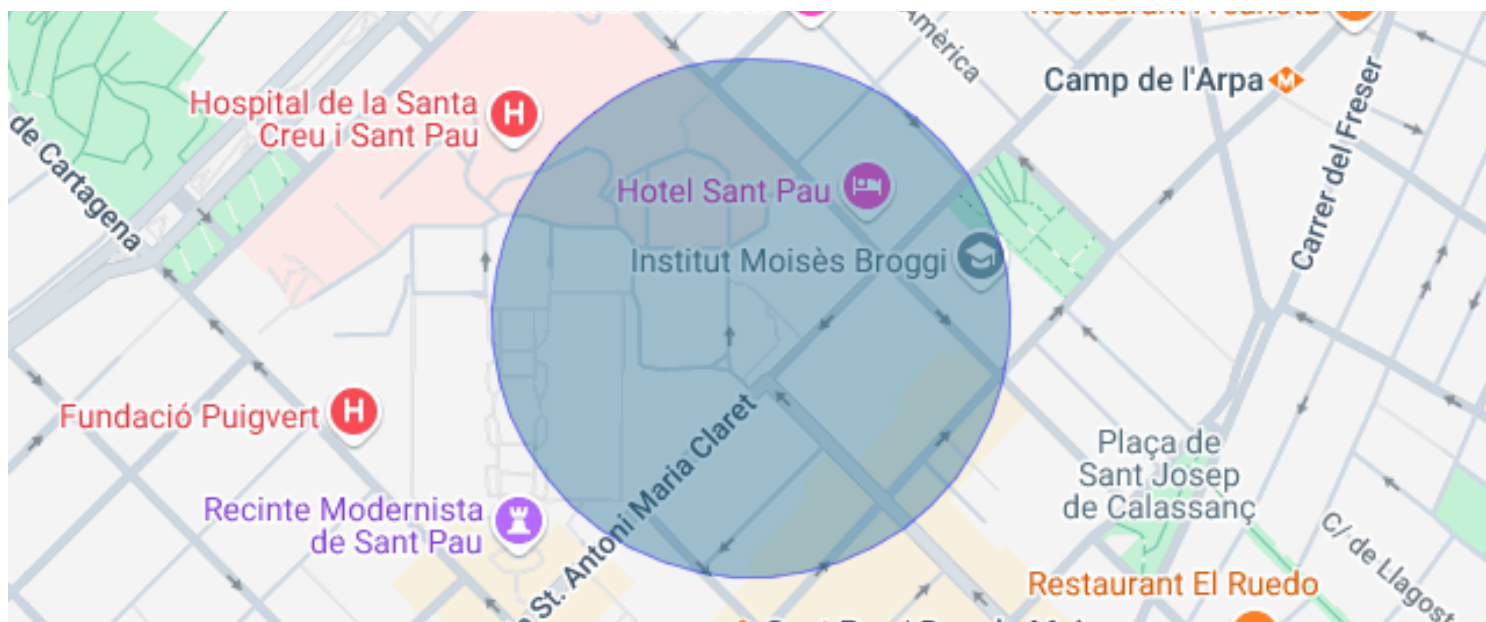




APARTMENT FOR SALE IN DRETA DE L'EIXAMPLE

El Camp de l'Arpa del Clot / Barcelona

Price	€413,000	✓ Balcony
Surface	107 m ²	
Bedrooms	3	
Bathrooms	2	
Energy classification	G	
Energy performance index	373.00 kw h/m ² year	
Emissions rating	G	
Emissions	78.00 co/m ² year	
Year of construction	1975	

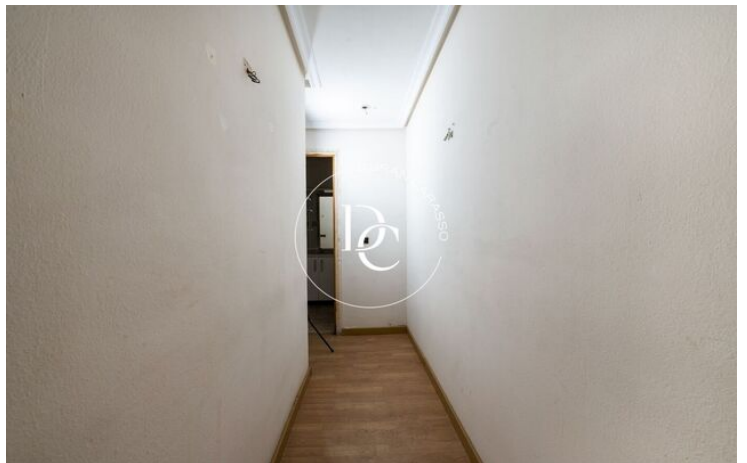
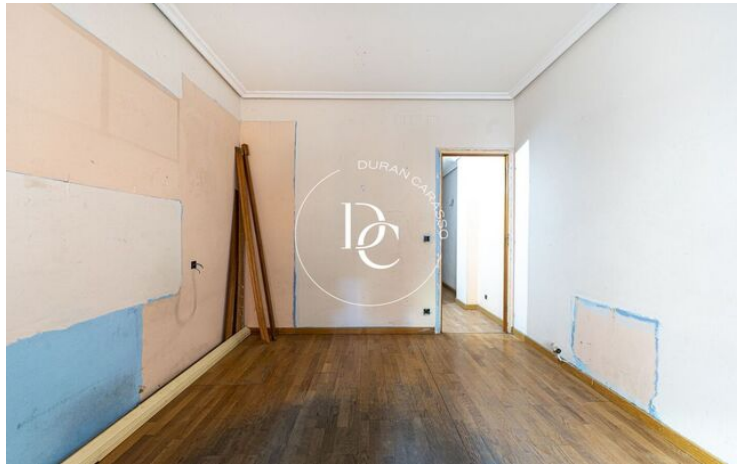
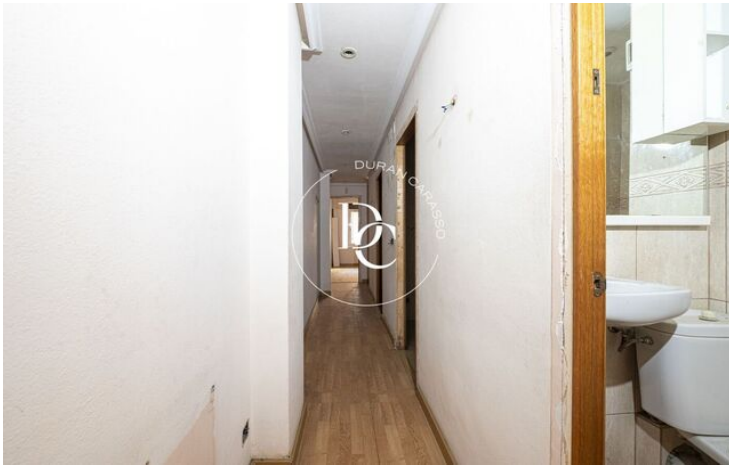


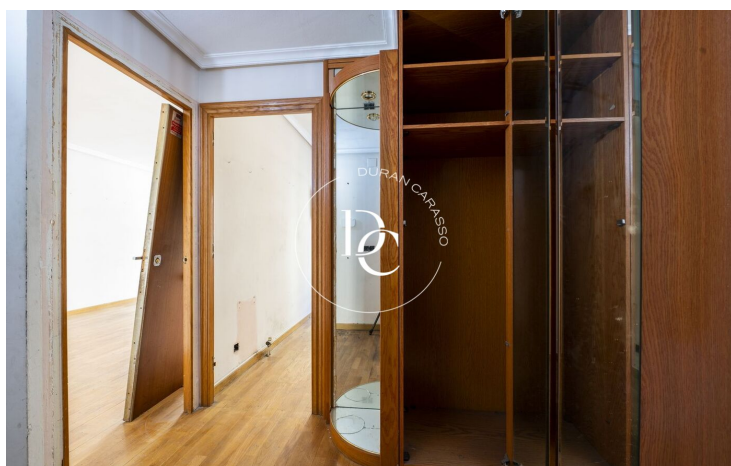
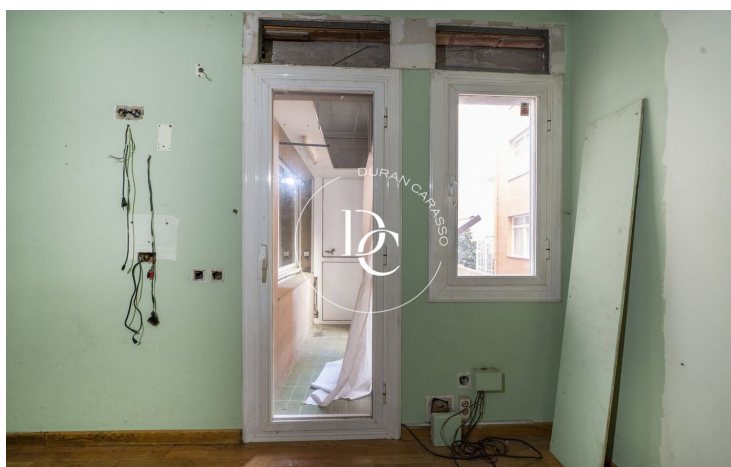
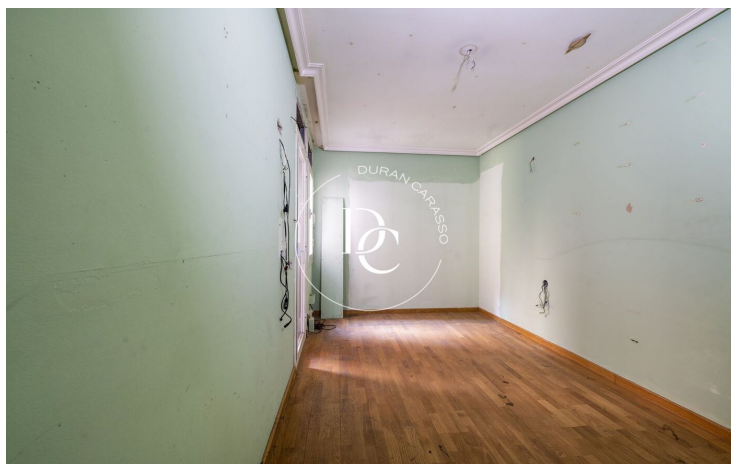
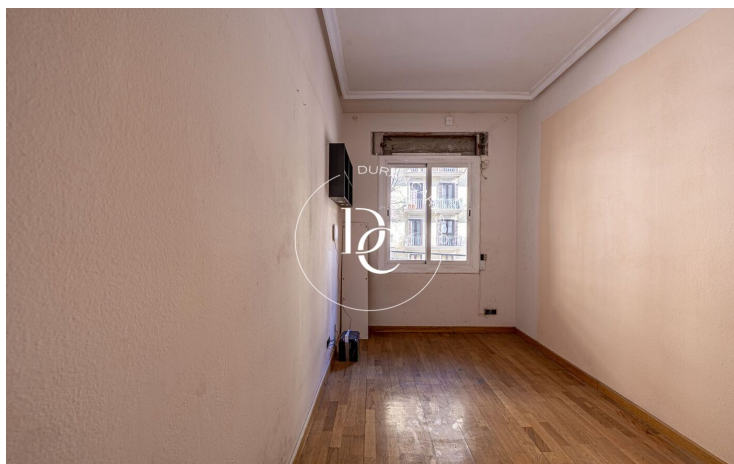
El Camp de l'Arpa del Clot / Barcelona

Opportunity for a spacious family apartment to reform in the heart of the "Eixample Dret" just two streets from the Sagrada Família. The property consists of 107m² of constructed area (98m² useful), divided into four rooms, two of them double and two singles, a large kitchen, a generous living room, a toilet, a complete bathroom and a laundry room. The orientation of the farm is south-east along Sant Antoni Maria Claret street and west in the interior patio and despite being a first floor it receives a generous amount of light throughout the day. The living room has an exit to the street through a fairly large balcony, the windows have double glazing, the floor is parquet and all the ceilings have moldings. We must also remember that the farm has an elevator.

As it could not be otherwise, the area in which we find the property is one of the best connected in Barcelona both by the metro network and buses, without forgetting the many restaurants and shops in the surrounding area.

If you want to move into a spacious apartment with all the comforts that the area offers and a few meters from one of the most visited monuments in the world, don't think twice, this is your apartment.





The data of each property is not part of an offer or a contract. Statements made by Durán Carasso Grupo Inmobiliario, verbally or in writing, regarding the property, its condition, or its value, should not be considered accurate or factual. The photographs only show specific parts of the property as they were at the time they were taken. The dimensions, areas, and distances provided are approximate and should be verified by the client. Computer-generated images are only an indication of the possible appearance of the property and may change at any time. Information regarding a property is subject to change at any time.

Contact us if you want more information or to arrange a viewing.