



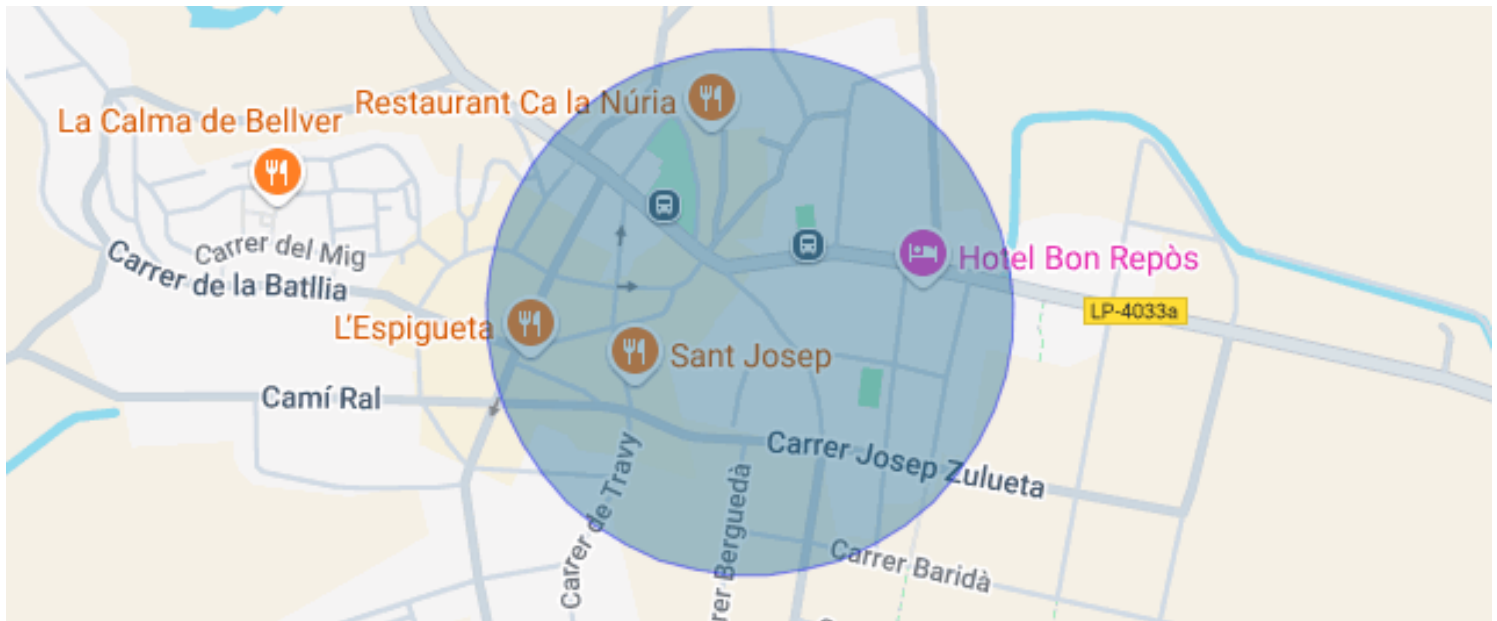
BEAUTIFUL HOUSE IN THE TALLÓ BELLVER AREA

Bellver de Cerdanya / La Cerdanya

PRICE UPON REQUEST

Sur. built	197 m ²
Bedrooms	4
Bathrooms	3
Plot	200 m ²
Energy classification	Pending
Emissions rating	Pending
Year of construction	2011

- ✓ Heating
- ✓ Storage
- ✓ Parking
- ✓ Built in closets
- ✓ Tourist license
- ✓ Mountain views
- ✓ Fireplace
- ✓ Terrace
- ✓ Outside



Bellver de Cerdanya / La Cerdanya

In one of the most idyllic areas of the Cerdanya Valley, we find this wonderful four-story house with a terrace.

Completely renovated and with a spectacular facade made with natural river stones from the area, you will be amazed not only by its location but also by its spacious interiors.

The ground floor features a living room with a built-in fireplace and direct access to the garden with views of the Cadí Mountains, a rustic yet charming kitchen, a bedroom, and a bathroom.

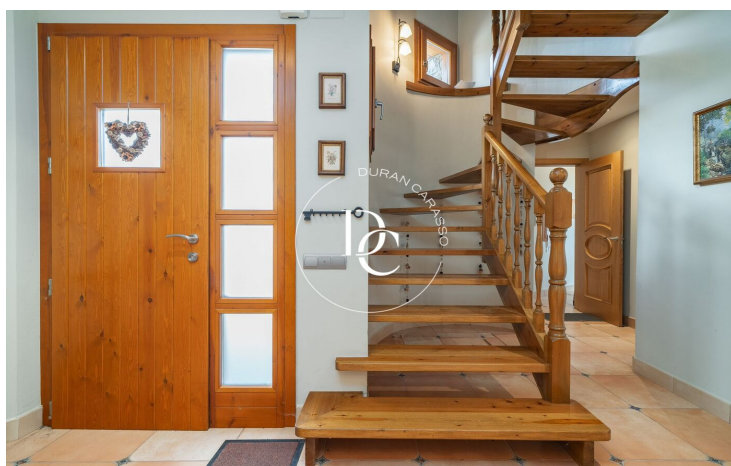
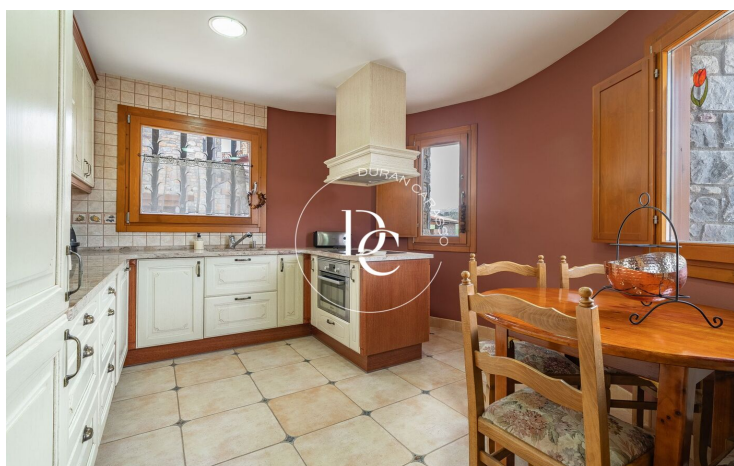
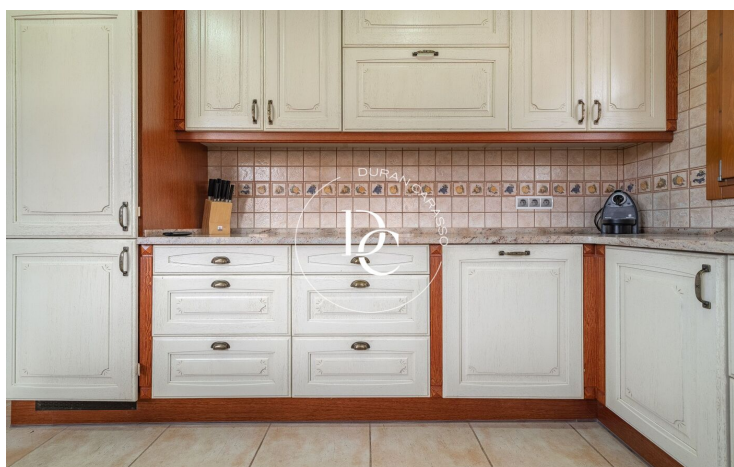
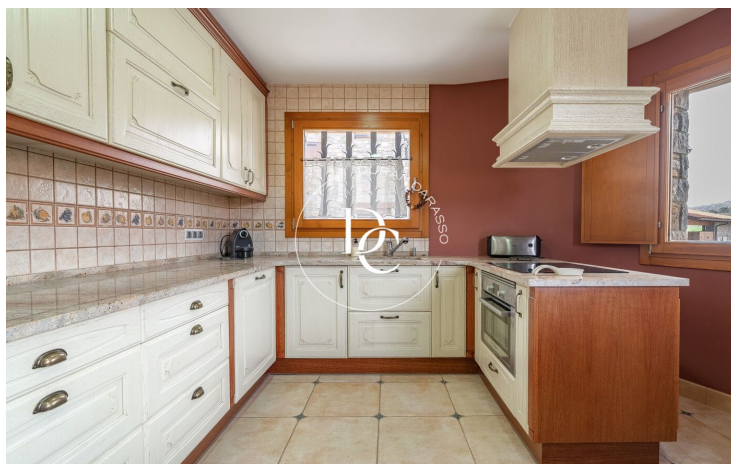
A second floor houses the other three bedrooms, one of them a suite, and another full bathroom.

And finally, a large attic room, ideal for long days of play or relaxation.

A home that will not leave you indifferent, located in the heart of nature, close to hiking trails, and close to the town of Bellver.

Live where you deserve to live in the Catalan Pyrenees!





The data of each property is not part of an offer or a contract. Statements made by Durán Carasso Grupo Inmobiliario, verbally or in writing, regarding the property, its condition, or its value, should not be considered accurate or factual. The photographs only show specific parts of the property as they were at the time they were taken. The dimensions, areas, and distances provided are approximate and should be verified by the client. Computer-generated images are only an indication of the possible appearance of the property and may change at any time. Information regarding a property is subject to change at any time.

Contact us if you want more information or to arrange a viewing.