



HOUSE FOR SALE IN OLIVELLA

Mas Mestre / Olivella

Price	€299,000	✓ Air conditioning	✓ Heating
Surface	157 m ²	✓ Views	✓ Backyard
Bedrooms	4	✓ Terrace	✓ Balcony
Bathrooms	2	✓ Built in closets	
Plot	857 m ²		
Energy classification	F		
Energy performance index	317.00 kw h/m ² year		
Emissions rating	F		
Emissions	66.00 co/m ² year		
Year of construction	1980		



Mas Mestre / Olivella

This house located in the area of Mas Mestre, Olivella, has a special charm. This 157m² built house is located on a 857m² plot, distributed over two completely independent floors.

We access the house by going down a few steps from the street level, and we find a welcoming terrace. We enter through the main door, which has access to the integrated kitchen, recently renovated, with the paneled refrigerator, fully equipped and with natural lighting.

Next, the very spacious living-dining room, with two large windows that lead out to a beautiful 20m² terrace focused on the outside area, with many possibilities. Parquet floors, radiator heating and split air conditioning make this room a very pleasant place.

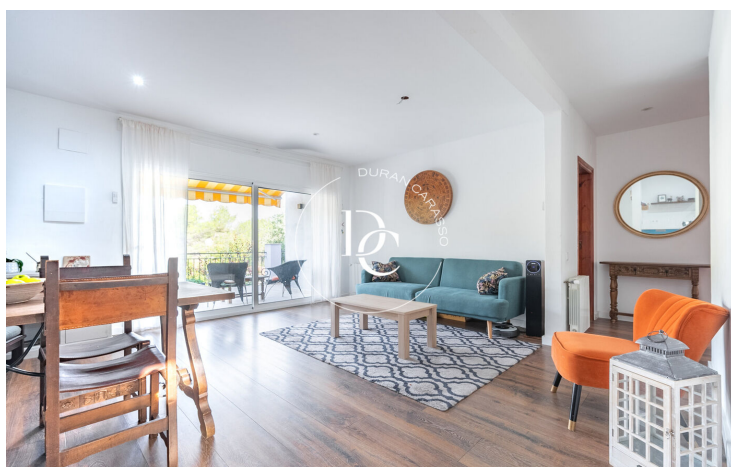
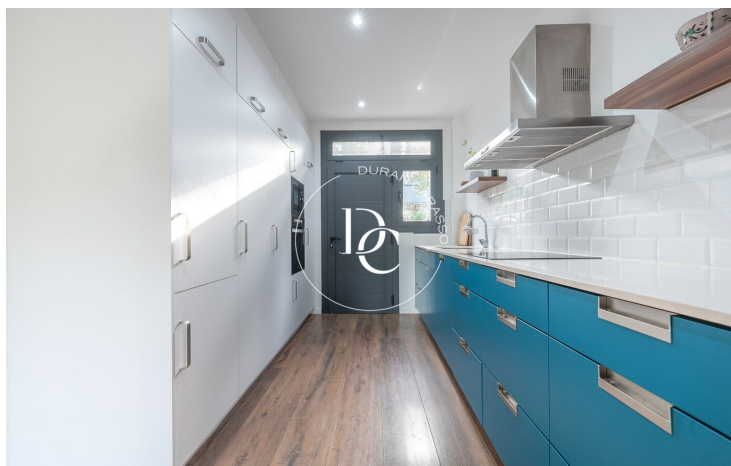
On this same floor we find a double room of considerable size and two very bright single rooms, with electric shutters and recently installed aluminum exterior carpentry.

The full bathroom, with a bathtub, gives use to the upper floor.

On the ground floor, totally independent from the upper floor, with its own access, we find another charming living room with access to the garden, a kitchenette and a large suite with a full bathroom and access to a beautiful terrace.

5 minutes from Sant Pere de Ribes and 8 minutes from Sitges, it is an ideal area to enjoy this wonderful home. Also ideal for investors, possibility of obtaining tourist rental.





The data of each property is not part of an offer or a contract. Statements made by Durán Carasso Grupo Inmobiliario, verbally or in writing, regarding the property, its condition, or its value, should not be considered accurate or factual. The photographs only show specific parts of the property as they were at the time they were taken. The dimensions, areas, and distances provided are approximate and should be verified by the client. Computer-generated images are only an indication of the possible appearance of the property and may change at any time. Information regarding a property is subject to change at any time.

Contact us if you want more information or to arrange a viewing.