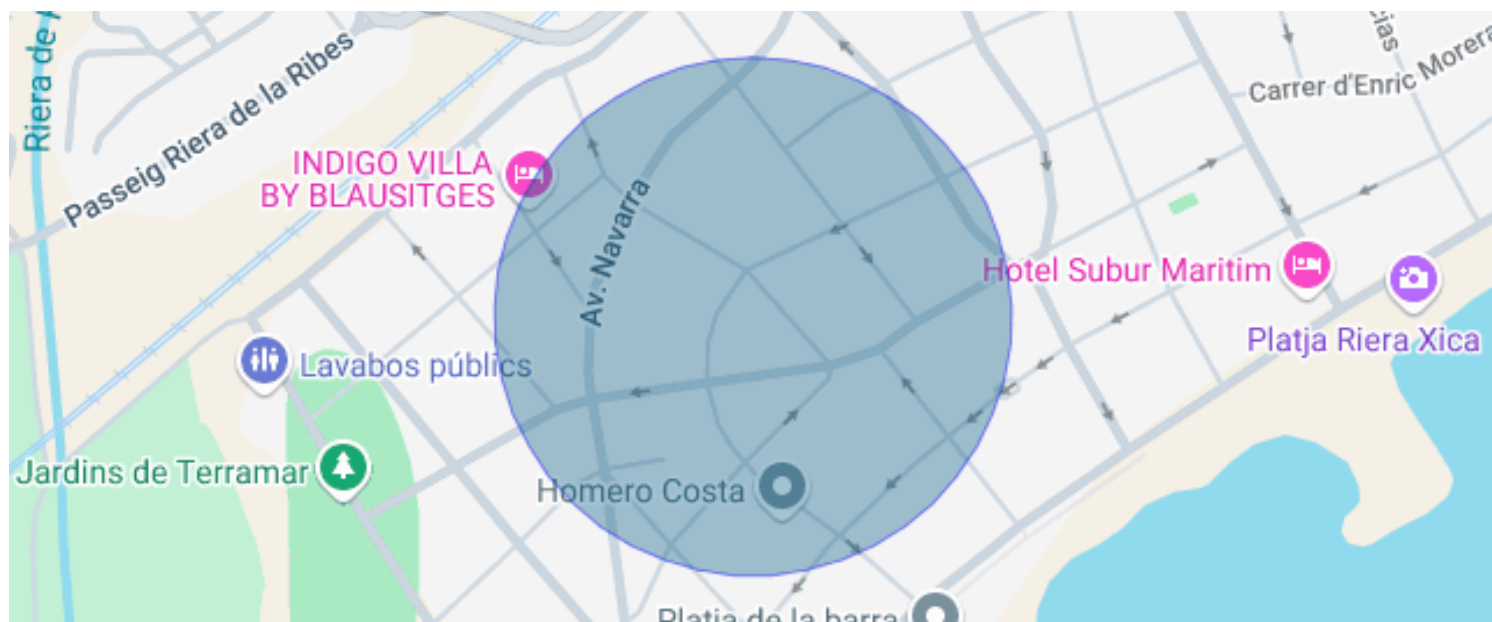




## EXCLUSIVE NEW DEVELOPMENT IN TERRAMAR, SITGES

Terramar / Sitges

<b>Price</b>	<b>€7,900,000</b>	✓ Pool	✓ Air conditioning
Sur. built	1.143 m <sup>2</sup>	✓ Heating	✓ Backyard
Bedrooms	6	✓ Lift	✓ Fireplace
Bathrooms	7	✓ Parking	✓ Outside
Plot	2.286 m <sup>2</sup>		
Energy classification	Pending		
Emissions rating	Pending		



## Terramar / Sitges

Sitges, a coastal town 35km from the city of Barcelona. Close to the sea we present a luxurious new construction project by the prestigious LUV architecture studio, located in the unbeatable residential area of Terramar, on a large plot of 2,286m<sup>2</sup>.

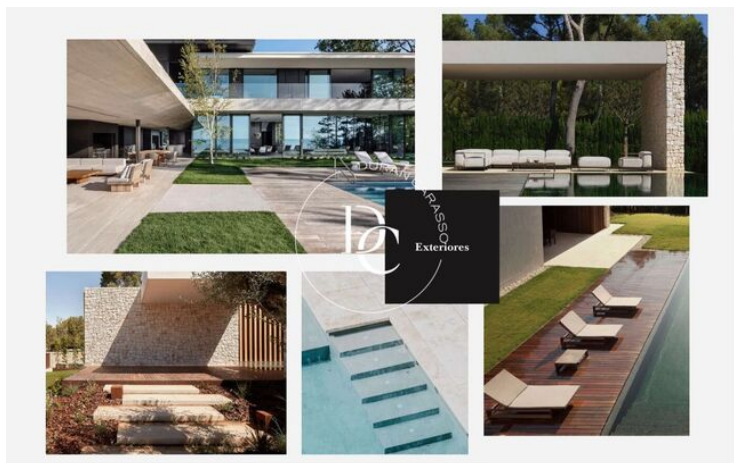
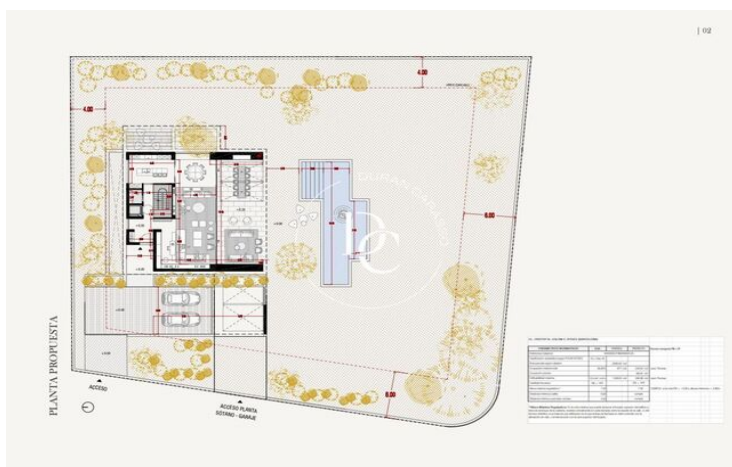
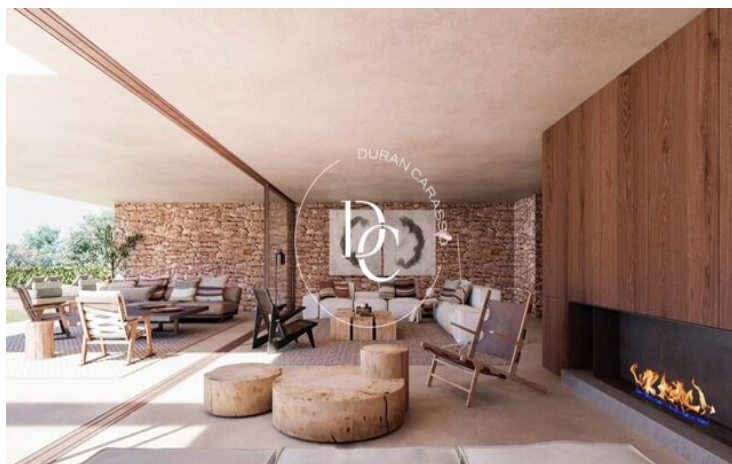
The project of a single-family house is developed around the wishes and aspirations of the client with a personalised process. The surface area of the plot allows for the construction of a maximum of 1,200 square metres between the ground floor and the first floor. Architects, interior designers, landscape architects, lighting designers, 3D artists, investment analysts and construction managers develop the project. This ensures a coordinated approach and greater attention to detail.

The studio is characterised by a vision of contemporary luxury, based on the fundamental pleasure of living, not focused on cost or excess, but on relaxed sophistication, timeless elegance, and the fusion of technology with craftsmanship.

Using the latest digital solutions, each design is modelled in 3D and spatial images are shared to visualise the home project chosen by the client.

If you are excited about living in a new build home by the sea, come and visit us.

Live where you deserve to live!



The data of each property is not part of an offer or a contract. Statements made by Durán Carasso Grupo Inmobiliario, verbally or in writing, regarding the property, its condition, or its value, should not be considered accurate or factual. The photographs only show specific parts of the property as they were at the time they were taken. The dimensions, areas, and distances provided are approximate and should be verified by the client. Computer-generated images are only an indication of the possible appearance of the property and may change at any time. Information regarding a property is subject to change at any time.

Contact us if you want more information or to arrange a viewing.