

FANTASTIC PENTHOUSE WITH TERRACE IN L'EIXAMPLE

La Nova Esquerra de l'Eixample / Barcelona

Price	€785,000
Surface	98 m ²
Bedrooms	2
Bathrooms	2
Energy classification	G
Energy performance index	262.00 kw h/m ² year
Emissions rating	F
Emissions	55.00 co/m ² year
Year of construction	1960

✓ Heating

✓ Lift

✓ Outside



La Nova Esquerra de l'Eixample / Barcelona

We are pleased to present a spectacular penthouse in Finca Regia located in one of the most exclusive areas of Barcelona. A dream property that embodies the luxury and elegance that characterise this city.

Built with high standards of quality and attention to detail, this 87.00 m² penthouse stands out for its exquisite design and meticulous layout. Every corner has been carefully designed to provide a unique and pleasurable living experience.

Entering the sensational penthouse we find a beautiful designer kitchen, fully furnished, designed by the prestigious firm Schimdt with maximum functionality in mind. The high-end Bosch materials and appliances guarantee an unparalleled culinary experience. In addition, there is plenty of storage space in the built-in cupboards to keep all your kitchen utensils and groceries tidy.

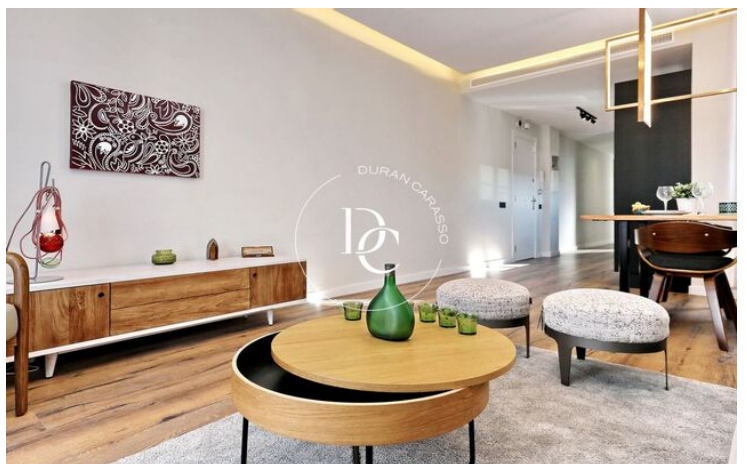
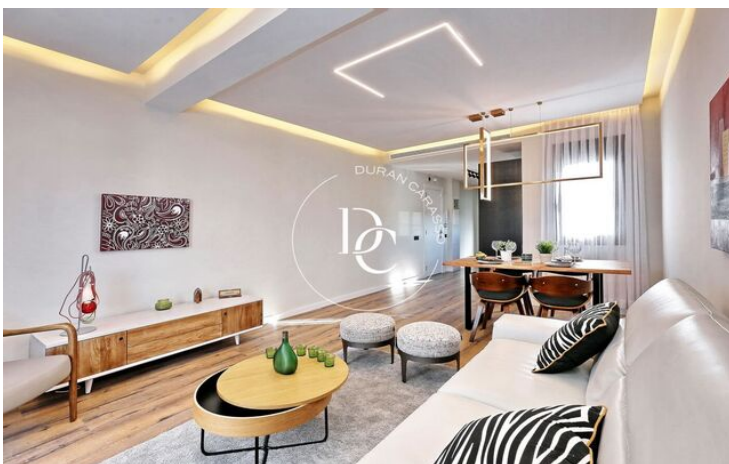
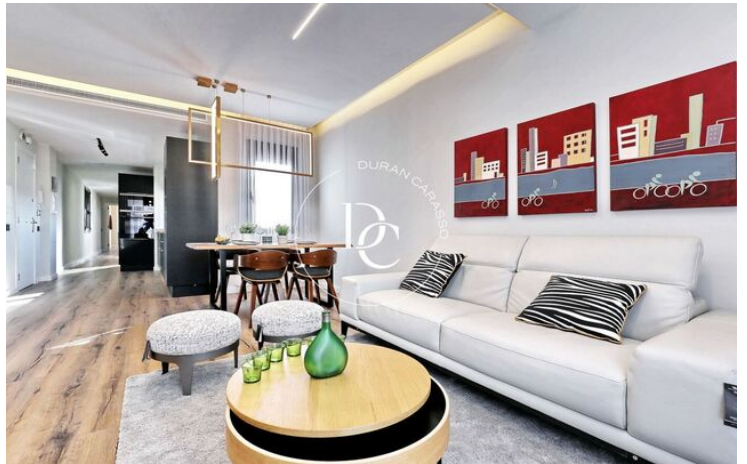
Continuing through the day area of this magnificent penthouse, you will be greeted by a spacious living and dining room that exudes elegance and sophistication. The large windows allow natural light to flood in, illuminating every corner of this wonderful space. From here, you will have direct access to an impressive 9,00 m² terrace, which will become your own private oasis. Imagine enjoying unforgettable evenings, contemplating the breathtaking panoramic views of the city as it vibrates to the rhythm of Barcelona's heartbeat.

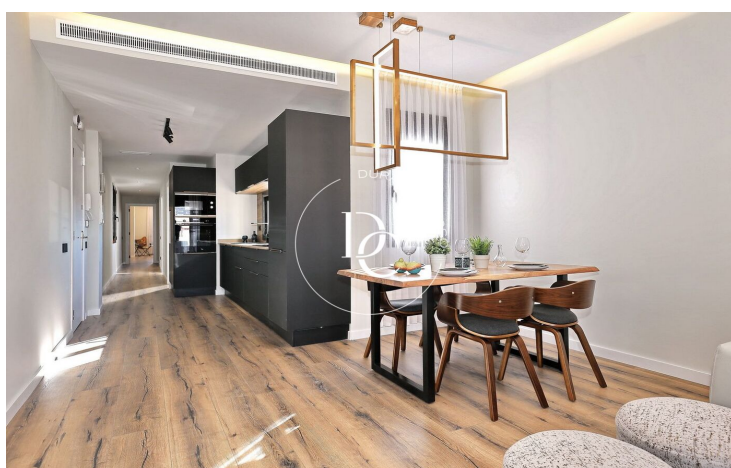
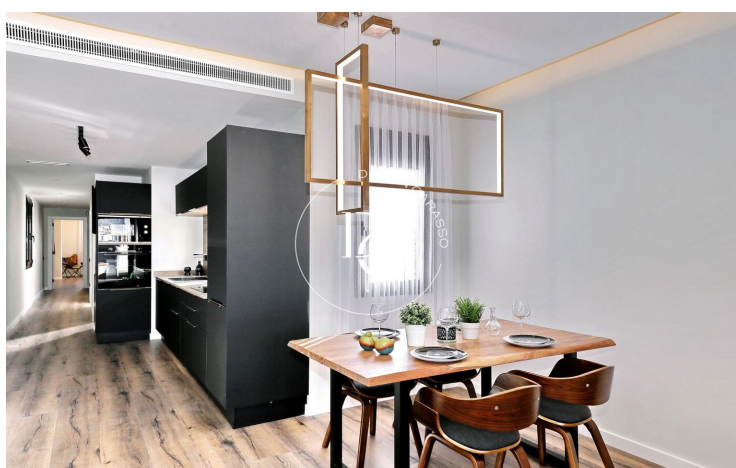
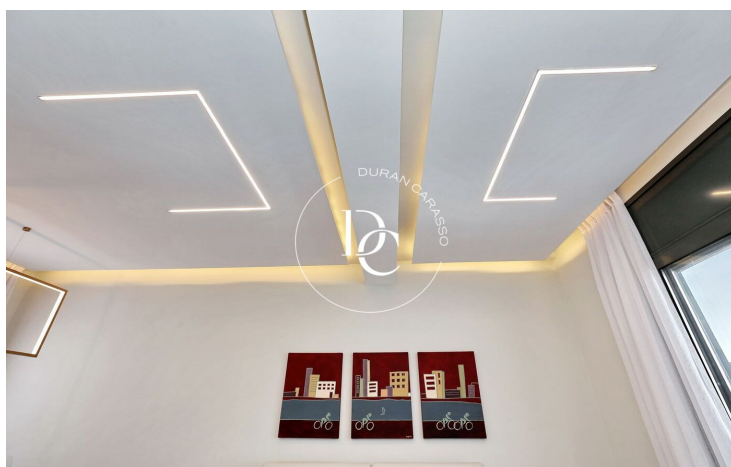
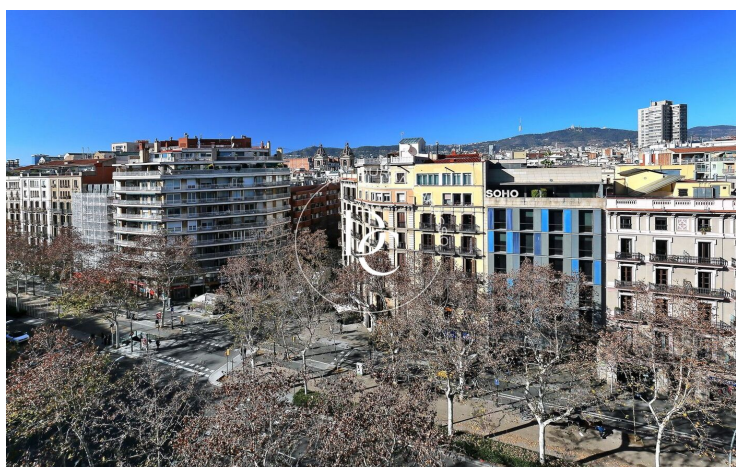
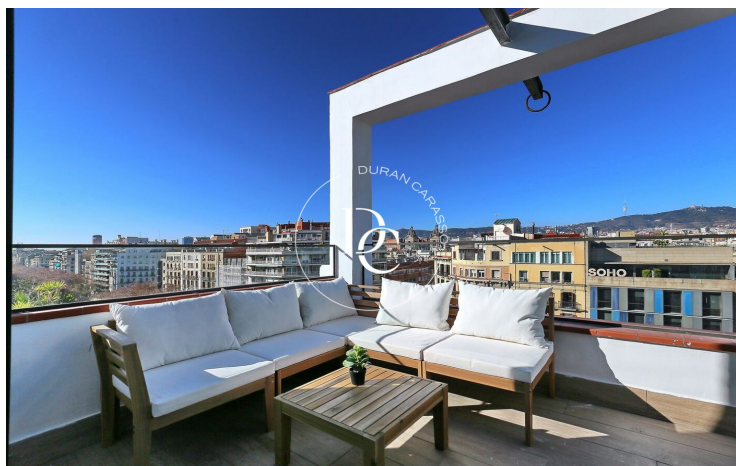
Moving to the opposite side, this luxury penthouse has two spacious bedrooms, one of which is a suite, where you can relax and unwind from the hustle and bustle of everyday life. Both rooms have been designed with a modern and elegant aesthetic, providing a cosy and relaxing atmosphere.

In addition, this exclusive penthouse has two full bathrooms, equipped with high quality fittings. Luxury finishes and attention to detail are evident in every corner of these wellness spaces.

This penthouse is located in a nine-storey 1920's Regia estate, which has a lift for your comfort and accessibility. It also has additional services that reinforce the luxury lifestyle you deserve. The concierge will be at your disposal to attend to any concerns that may arise and guarantee your security and peace of mind at all times. The armoured door and security system make this home a safe and private haven.

...





The data of each property is not part of an offer or a contract. Statements made by Durán Carasso Grupo Inmobiliario, verbally or in writing, regarding the property, its condition, or its value, should not be considered accurate or factual. The photographs only show specific parts of the property as they were at the time they were taken. The dimensions, areas, and distances provided are approximate and should be verified by the client. Computer-generated images are only an indication of the possible appearance of the property and may change at any time. Information regarding a property is subject to change at any time.

Contact us if you want more information or to arrange a viewing.